

A long, bright office hallway with a carpeted floor. On the left and right sides, there are glass-walled office cubicles with light-colored wooden desks. The ceiling is white with recessed circular lights. In the background, there are yellow pillars and a window. A mezzanine level with a glass railing is visible on the left side.

# RG GLASS WALL

**bene**

02



03

## RG Glass wall

The use of glass offers unrivalled transparency in the office space. A key design element of Bene's RG glass wall is its nominal joint detailing, giving it an almost seamless appearance.

The glass wall is composed of minimal horizontal profiles that fix to the ceiling and floor and hold generously sized glass panels, which seemingly retreat in to the architecture of the room.

The wall system can be single- or double-glazed with a variety of glass thicknesses, depending on static and acoustic requirements. The RG glass wall represents the middle-ground between rigid architectural elements and flexible interior fitting systems.



# FACTS

- 1** Thanks to nominal joint detailing, the frameless design of Bene RG glass allows for the most transparent finish imaginable.
- 2** 25 mm and 45 mm floor and ceiling profiles ensure a clean appearance.
- 3** Acoustic requirements up to 51 dB are available in the single- and double-glazed version for room heights up to 400 cm.
- 4** A variety of door solutions are available for different applications, from single or double-leafed doors without visible hinges.
- 5** The running profile for the frameless sliding door is directly fixed to the glass. Sliding doors can be locked at handle height.
- 6** Due to the perfect integration of function and design in the Bene range, the RG glass wall can be combined with a variety of Bene wall systems.



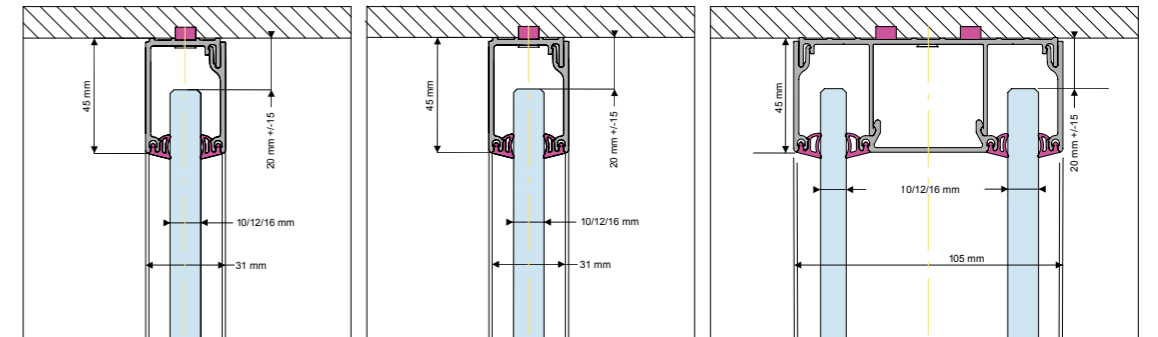
# TECHNICAL DETAILS

- CONSTRUCTION:** Single-glazed and double-glazed
- FLEXIBILITY:** Reversible partitioning, very easy refitting
- GLAZING:** Glass thicknesses of 10 mm, 12 mm, 16 mm
- LEVELLING:** Tolerance compensation at floor +/- 3 mm or +/-15 mm and ceiling +/- 15 mm
- STANDARD:** ETAG 003
- ACOUSTICS / SOUND PROTECTION:** Single-glazed: up to 38 dB (Rw) corresponds to 1 x 16mm LSG acoustic glass  
Double-glazed: up to 51 dB (Rw) corresponds to 2 x 16 mm LSG acoustic glass
- COLORS:** All aluminium profiles, anodised A6 / C0, powder coated RAL 9011, as well as special colors upon request.  
Glass seals to elements can be black or light grey.

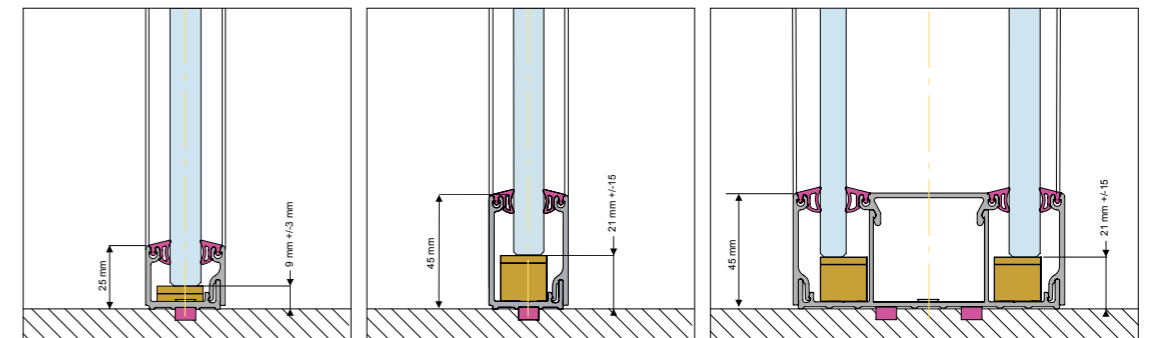


## WALL ELEMENT, VERTICAL SECTION

### Ceiling connection



### Floor connection



single-glazed 25 / 45 mm

single-glazed 45 / 45 mm

double-glazed 45 / 45 mm

# FEATURES

## JUNCTIONS, CONNECTIONS AND BANDRASTER

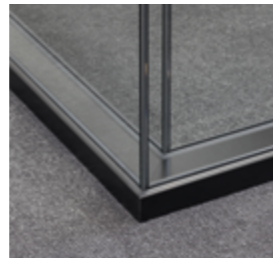
Different variants of junction and connection elements allow flexibility in the implementation of customer requirements, considering the architectural features. The glasses are glued with a transparent VHB duct tape. The Bandraster made from aluminium are used for cabling and installation of on-site switches and plug sockets in cavity wall boxes or to connect draywall or other Bene wall systems.



T-joints with VHB gluing



Bandraster for T-connection to R-Platform



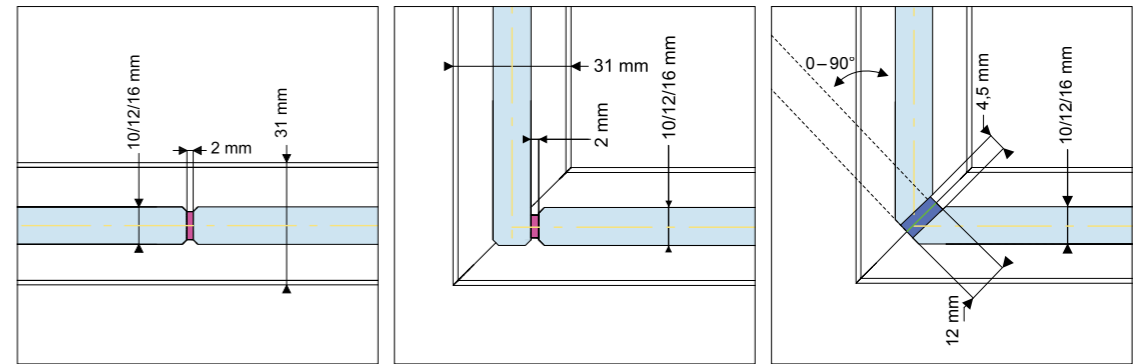
90° connection bevelling



Connection to the wall double-glazed

## ELECTRICAL BLINDS

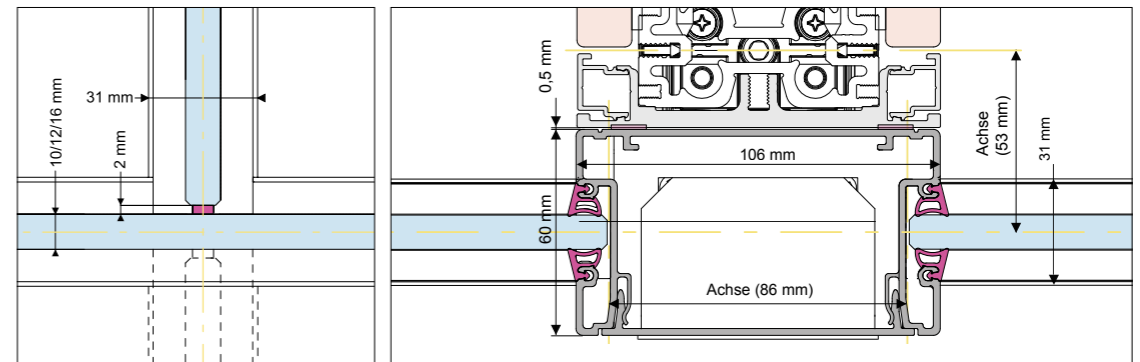
The electrical horizontal blinds are integrated into the double-glazed RG corridor wall. Several adjacent blinds can be adjusted to exactly the same height using a synchronised controller. The slats are available in black, white, aluminium and RAL upon request and in widths of 25 mm.



Linear connections

90° connections (straight)

Variable 0-90° connections optional bevelling



Three-sided / four-sided connections

R-Platform T-connection to bandraster single-glazed



# DOOR OPTIONS

## FRAMELESS HINGED DOORS

Frameless hinged doors include a continuous hinge profile and provide maximum transparency. Hinged doors can be either full room height or with an over door panel. Single- or double-leaf doors can be installed in the single-glazed glass wall.



Hinged door at full room height up to 300 cm ceiling height



Double hinged door with over door panel, stationary door and framed by a continuous door hinge at a room height of up to 350 cm



Glass door handle



Internal lock box, adhesion of lock box optionally in black or light grey

## HINGED DOORS WITH FRAME

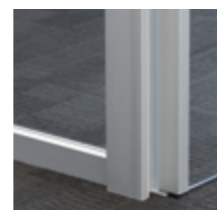
Hinged doors with frame include a continuous hinge profile for high acoustic requirements. Hinged doors are available for different applications either full room height or with a glass over door panel, single- or double-leaf doors, for installation in single- or double-glazed walls.



Full room height hinged glass door with frame, room height up to 300 cm



Double-hinged door in solid-core with frameless head panels at room height up to 350 cm



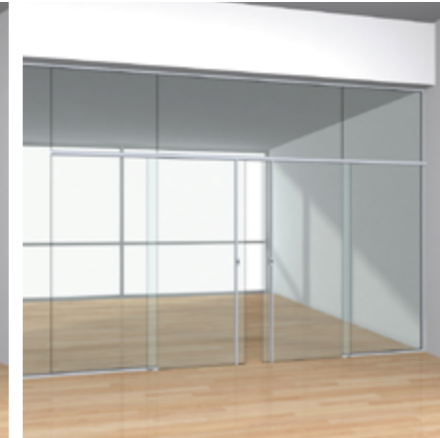
Hinges are not visible thanks to a continuous door hinge with concealed pivot bearing

## FRAMELESS SLIDING DOORS

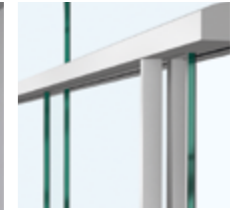
The frameless sliding doors present a sheer look and offer maximum transparency whilst providing perfect function. Sliding doors, available as single- or double-leafed, at room height or with over door panel can be integrated in the single-glazed glass wall.



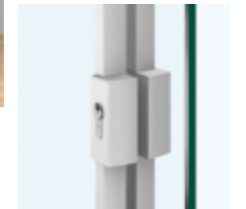
Sliding door at full room height without vertical profiles up to 300 cm ceiling height



Double-leafed sliding door with over door panel and one long handle for a room height at up to 350 cm



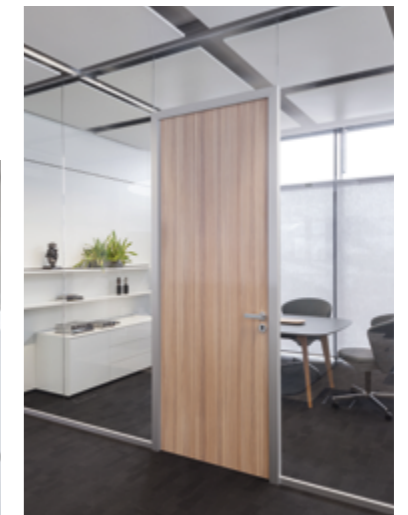
The minimalistic look of the sliding rail conveys lightness and elegance

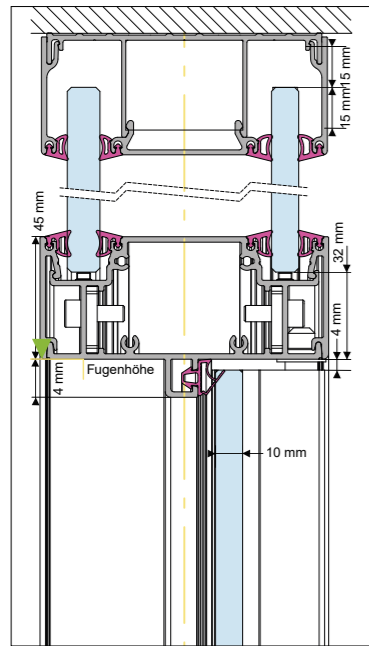


The lock is located at the customary handle height. The closure within the sliding rail leaves the soil untouched

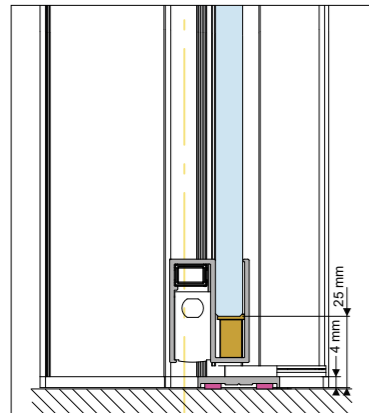
## DOOR CLOSER

Door closer can be installed optionally at any time at the glass door. For solid-core doors these are integrated concealed in the door leaf. Additionally they can be provided with an opening limiter and a grid fixing unit for mechanical fixing of doors.

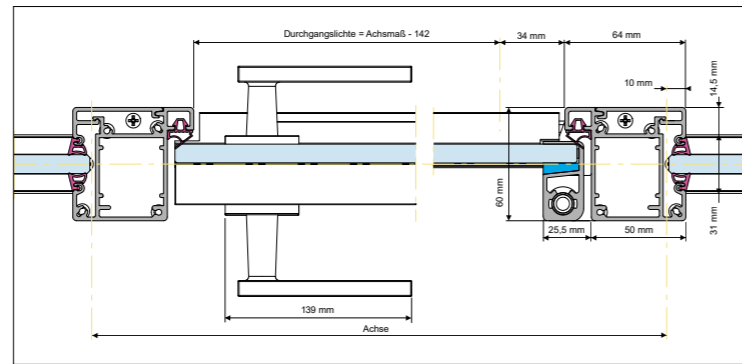




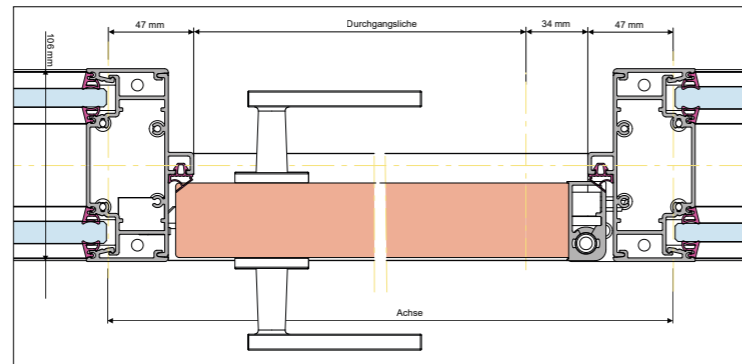
Ceiling connection, glass hinged door with frame double-glazed with over door panel



Floor connection, glass hinged door with frame double-glazed with over door panel with compensation profile and floor seal



Horizontal section, single-leaf glass hinged door with frame single-glazed



Horizontal section, solid core hinged door with frame double-glazed



# TECHNICAL DETAILS

Types	Sound insulation values in Rw	Element width in cm	Max. room height in cm	Joint height in cm	Clearance in cm
<b>Glass panel, single-glazed<sup>1</sup></b>					
10 mm TSG glass	32 dB	15 - 150	300		
12 mm TSG glass	32 dB	20 - 150	400		
12 mm LSG acoustic glass (2 x 6 mm float)	37 dB	20 - 150	400		
16 mm LSG acoustic glass (2 x 8 mm float)	38 dB	20 - 150	400		
<b>Glass panel, double-glazed<sup>1</sup></b>					
2 x 10 mm TSG glass	42 dB	20 - 150	350		
2 x 12 mm TSG glass	42 dB	20 - 150	400		
2 x 12 mm LSG acoustic glass (2 x 6 mm float)	48 dB	20 - 150	400		
2 x 16 mm LSG acoustic glass (2 x 8 mm float)	51 dB	20 - 150	400		
12 mm LSG acoustic glass & 10 mm TSG glass	47 dB	20 - 150	350		
16 mm LSG acoustic glass & 12 mm LSG acoustic glass	50 dB	20 - 150	400		
<b>Sliding door, at room height (next to 10 mm TSG)<sup>2</sup></b>					
Sliding door with over door panel (next to 10 mm TSG)		80 - 120	300		66 - 106
Sliding door, at room height (next to 12 mm TSG)		80 - 120	300	200 - 265	66 - 106
Sliding door, at room height (next to 12 mm TSG)		80 - 120	300		66 - 106
Sliding door with over door panel (next to 12 mm TSG) <sup>3</sup>		80 - 120	350	200 - 300	66 - 106
<b>Double sliding doors frameless (10 mm TSG)<sup>2</sup></b>					
Sliding door with over door panel (next to 10 mm TSG)		160 - 200	300	200 - 265	132 - 172
Sliding door with over door panel (next to 12 mm TSG) <sup>3</sup>		160 - 200	350	200 - 300	132 - 172
<b>Hinged doors frameless<sup>2</sup></b>					
Hinged door at room height or with over door panel (10 mm ESG) <sup>3</sup>		80 - 100	300	200 - 265	74,9 - 94,9
Hinged door at room height (12 mm ESG)		80 - 100	300		74,9 - 94,9
Hinged door with over door panel (12 mm ESG) <sup>3</sup>		80 - 100	350	200 - 265	74,9 - 94,9
<b>Double hinged doors frameless<sup>2</sup></b>					
Hinged door with over door panel (10 mm ESG) <sup>3</sup>		145 - 200	300	200 - 220	135,5 - 190,5
Hinged door with over door panel (12 mm ESG) <sup>3</sup>		145 - 200	350	200 - 230	135,5 - 190,5
<b>Hinged doors with frame<sup>4</sup></b>					
Hinged door at room height (10 mm ESG)	32 dB	80 - 110	300		65,8 - 95,8
Hinged door at room height (10 mm VSG/ TVG)	37 dB	80 - 110	220		65,8 - 95,8
Hinged door at room height (40 mm solid-core)	29 dB / 37 dB <sup>5</sup>	80 - 110	280		65,8 - 95,8
Hinged door with over door panel (10 mm ESG) <sup>3</sup>	32 dB	80 - 110	350	200 - 300	65,8 - 95,8
Hinged door with over door panel (10 mm VSG-TVG)	37 dB	80 - 110	350	200 - 220	65,8 - 95,8
Hinged door with over door panel (40 mm solid-core) <sup>3</sup>	29 dB / 37 dB <sup>5</sup>	80 - 110	350	200 - 280	65,8 - 95,8
<b>Double hinged doors with frame<sup>2</sup></b>					
Hinged door at room height (40 mm solid-core)		130 - 200	280		112,4 - 182,4
Hinged door with over door panel (40 mm solid-core) <sup>3</sup>		130 - 200	350	200 - 280	112,4 - 182,4

<sup>1</sup> The single-glazed and double-glazed RG glass wall can be combined with the hinged doors of the R-Plattform

<sup>2</sup> Installation only possible for the single-glazed RG glass wall

<sup>3</sup> Height of over door panel min. 35 cm, max. 150 cm

<sup>4</sup> With drop seal

<sup>5</sup> SSK 2 doors

RG glass wall tested in accordance with ETAG 003



**INSPIRING OFFICES. SINCE 1790.**